

SB06系列(series)

Press plunger hydraulic cylinder / 压机用液压缸

SBVZG is plunger cylinder dedicated for press of hydraulic machinery, and is suitable for various types of cylinder machine; its working pressure generally is 26MPa, plunger diameter 63–520mm, and effective travel 0–5000mm.

SBYZG 型为液压机械压机专用柱塞油缸，适用于各类油缸成型机，工作压力一般为 26MPa，柱塞直径：63~520mm，有效行程：0~5000mm。

Model designation

又名呼羅

Specifications / technical parameters 规格/技术参数

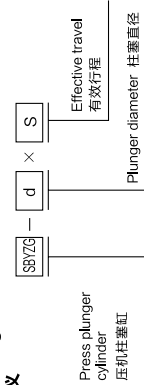
Model 型号	Plunger diameter 柱塞直径 d (mm)	Effective area 有效面积 (cm ²)	Thrust 推力(kgf) 20MPa
SBV7G-100×S	100	78.54	20420.35
SBV7G-125×S	125	122.75	31906.80
SBV7G-140×S	140	153.94	40023.89
SBV7G-160×S	160	201.06	52726.10
SBV7G-180×S	180	254.47	66151.94
SBV7G-200×S	200	314.16	81081.41
SBV7G-220×S	220	385.01	98534.50
SBV7G-230×S	230	415.48	108023.66
SBV7G-240×S	240	452.39	11762.123
SBV7G-250×S	250	490.87	127627.20
SBV7G-260×S	260	530.93	138041.58
SBV7G-280×S	280	615.75	160095.86
SBV7G-300×S	300	706.86	181783.17
SBV7G-320×S	320	804.25	209104.40
SBV7G-340×S	340	907.92	236059.27
SBV7G-360×S	360	1017.88	264647.77
SBV7G-400×S	400	1256.44	326725.64
SBV7G-420×S	420	1385.44	360215.01
SBV7G-460×S	460	1661.90	432094.65
SBV7G-500×S	500	2123.72	552166.32

Notes:

1. Upper oil inlet fixing bolt hole and plunger end face are connected, and to be separately agreed when ordering.
2. Oil inlet position of small plunger cylinder can be determined by user himself.
3. D1 is installation positioning size for plunger cylinder; cylinder outside diameter $D2 \leq D1$

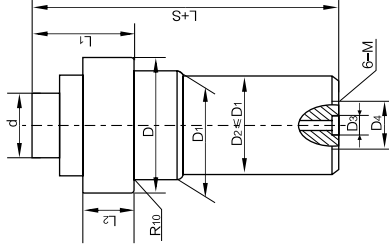
注: 1、上置式油口固定螺栓孔及柱塞端面联接, 定货时另行商定。

- 2、小型柱塞油缸进油口位置可由用户自定。
- 3、D1为柱塞缸安装定位尺寸；缸体外径 $D2 \leq D1$



Outline and installation dimensions

安装外形图



Installation & outline dimensions

d	D	D ₁	D ₂	D ₃ ×深 Deep	D ₄	L	L ₁	L ₂	6-M
100			φ 140	—	M27 × 2				—
125			φ 180	—	M27 × 2				—
140	φ 310	φ 210	φ 194	—	M27 × 2	300	140	70	—
160	φ 360	φ 230	φ 230	—	M33 × 2	320	140	70	—
180	φ 360	φ 260	φ 260	—	M33 × 2	350	165	80	—
200	φ 380	φ 280	φ 280	—	M42 × 2	375	165	80	—
220	φ 400	φ 310	φ 310	—	M42 × 2	400	185	100	—
230	φ 410	φ 310	φ 310	—	M42 × 2	410	185	100	—
240	φ 420	φ 340	φ 340	φ 54 × 5	φ 120	430	185	100	M16
250	φ 460	φ 350	φ 350	φ 54 × 5	φ 120	430	220	110	M16
260	φ 505	φ 360	φ 360	φ 54 × 5	φ 120	440	260	135	M16
280	φ 520	φ 395	φ 395	φ 54 × 5	φ 120	460	280	135	M16
300	φ 540	φ 410	φ 410	φ 54 × 5	φ 120	460	280	160	M16
320	φ 570	φ 440	φ 440	φ 54 × 5	φ 120	475	285	200	M16
340	φ 590	φ 465	φ 465	φ 66.5 × 5	φ 136	520	300	200	M24
360	φ 610	φ 500	φ 500	φ 66.5 × 5	φ 136	630	330	200	M24
400	φ 680	φ 570	φ 570	φ 66.5 × 5	φ 136	690	330	200	M24
420	φ 735	φ 612	φ 612	φ 70 × 5	φ 140	700	380	250	M24
460	φ 790	φ 660	φ 660	φ 70 × 5	φ 140	710	380	250	M24
520	φ 900	φ 730	φ 730	φ 80 × 5	φ 160	800	495	270	M24
600	φ 1020	φ 800	φ 800	φ 80 × 5	φ 160	860	520	300	M24
700	φ 1120	φ 860	φ 860	φ 100 × 5	φ 200	960	550	300	M27
800	φ 1250	φ 980	φ 980	φ 100 × 5	φ 280	1020	580	340	M27
1000	φ 1480	φ 1200	φ 1200	φ 150 × 5	φ 280	1100	620	400	M33
1200	φ 1800	φ 1460	φ 1460	φ 150 × 5	φ 350	1250	730	500	M36

SBDH Series Multi-stage Hydraulic Cylinders, including single and double acting types, are applicable where large travel and short mounting distance or total length (travel may be larger than mounting distance or total length) are required. SBDH Series hydraulic cylinders produced by us, featuring compact arrangement, reasonable structure, reliable operation, easy assembly/disassembly and easy maintenance, are widely used for various kinds of working machinery, mining machinery, handling machinery, environmental protection machinery, transportation machinery (wrecker) etc. For this series of hydraulic cylinders, it is possible to design by customization such parameters as working pressure, working travel, mounting distance, number of stages, travel of each stage and rod diameter etc. upon user's demand.

SDH系列多级液压缸适用于行程大而安装短或总长(行程可以大于安装短或总长的场合,有单作用和双作用)。我厂重工业的SDH系列液压缸布局紧凑、结构合理、工作可靠、装卸方便、易于维修,广泛用于采选工作机械(矿山机械、起重运输机械、环保机械、交通机械(滑车)等)。该系列液压缸的工作压力、工作行程、安装距、使用级数、各级行程和杆径等参数可根据客户需要进行设计。

Type Selection (single acting) 型号选择 (单作用)

SBDH001 - 100 - III

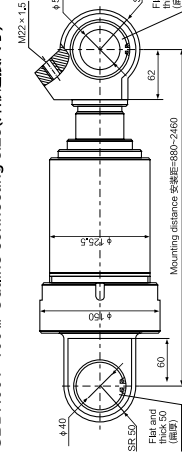
SBDH001 - 100 Number

100	First stage bore	第一级缸径	Third stage bore	三级缸径
100	First stage bore	第一级缸径	Third stage bore	三级缸径

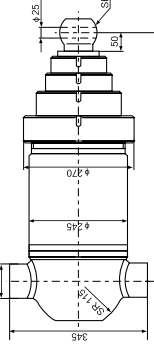
Technical parameters 技术参数

Model	型 号	Working pressure 工作压/(Mpa)	Total travel 总行程(mm)	Mounting distance 安装距(mm)	Cushion position 缓冲部位
SBDDH01-100III		16	1580(Three stage 三级)	880	-
SBDDH02-200III		20	3250(Four stage 四级)	1270	-

SBDH001-100 III Outline connecting size (外形连接尺寸)



SBDH002-200V Outline connecting size (外形连接尺寸)



Type Selection(double acting) 型号选择 (双作用)

DPH100	-	250/220.160/150.100/90
--------	---	------------------------

SPDH100 - Number of special cylinder determined by the Company 公司自定特殊缸编号

20/220	160/150	100/90
--------	---------	--------

Bore is respectively 250/160/100 Rod diameter is respectively 220/150/90

0/220、160/130、100/90

Technical parameters 技术参数

Model	Model No.	Working pressure / 工作压力(Mpa)	Total travel / 总行程(mm)	Mounting distance / 安装距(mm)	Cushion position / 缓冲部位
	SBDH100-250/220.160/150.100/90	16	2700	1400	—
	SBDH111-110/90.75/40	16	±848	2500.5	Rod chamber / 杆腔

SBDH110-250/220.160/150.100/90

Outline connecting size(外形连接尺寸)

